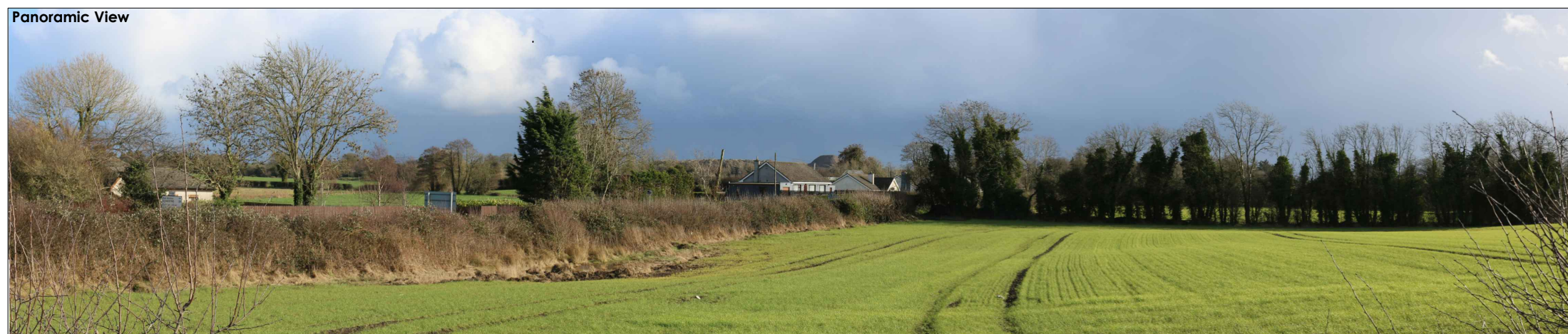
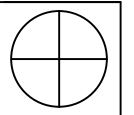




Location:
Viewpoint Elevation: 73m AOD (Malin Head)
Distance to Site: 1850m
Horizontal Angle of View: 90 Degrees



Viewpoint 1 East from R160.
View East from the R160 approximately 1.8km from the subject site. From this open section of regional road the upper portions of the existing overburden tip is visible - this element will gradually be removed over the course of the development. The existing and proposed extractive areas not visible due to intervening topography and structure vegetation .

Photo Viewpoint 1

Fig 9.4

| Viewpoint | Duration | Baseline Landscape & Visual Sensitivity | Magnitude | Mitigation | Predicted Effect | | | | | |
|---------------|----------------------|---|-----------------|---|---------------------|--------|-----------|-----|--------------|---|
| 1 | Long Term | Medium - Low (Landscape) Medium - Low (Visual) | Low Very Low | Considered sequence of extraction and phased restoration. Review all boundaries for opportunities to improve screening through earthworks and planting. Gradual removal of existing overburden stockpile. | Minor Negligible | | | | | |
| client | Keegan Quarries Ltd. | | date | July. 19 | scale | NTS@A3 | by | pjm | notes | Image represents an eyelevel impression of view at monocular distance of 30cm |

Tromman Quarry, Rathmolyan